



equips Maine communities, landowners, and conservation partners with tools to protect, restore, and connect important habitats and ecosystems in a changing climate.

Habitat Connectivity

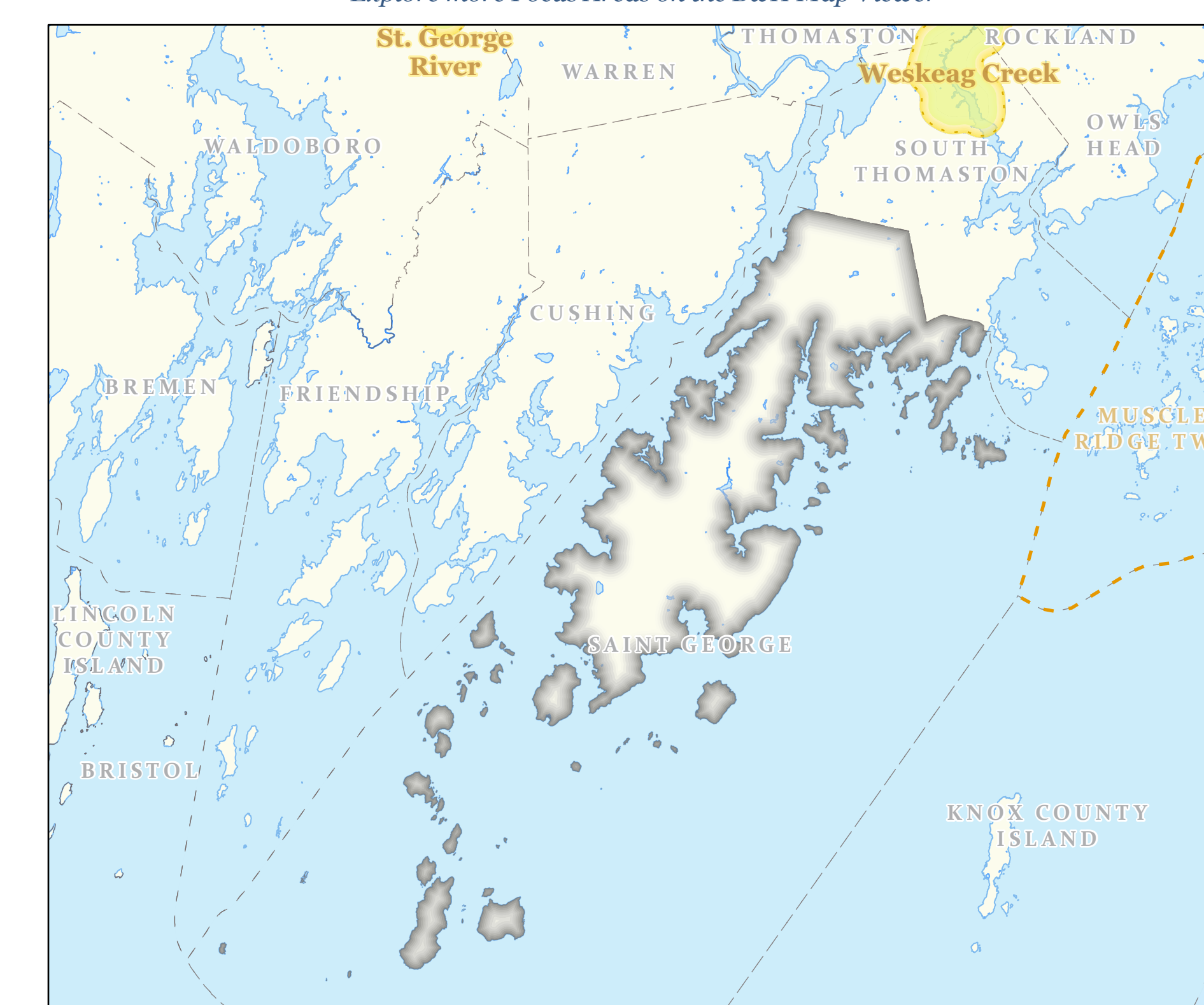
Conserved Lands, Undeveloped Habitat Blocks & Habitat Connectors

Saint George



Focus Areas of Statewide Ecological Significance

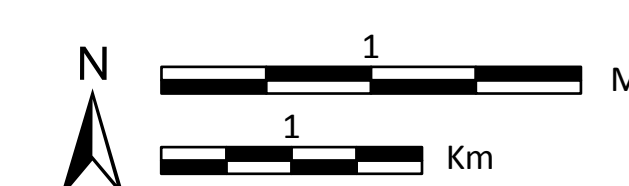
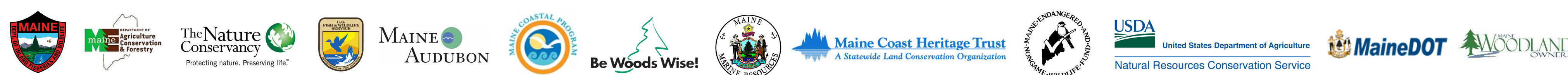
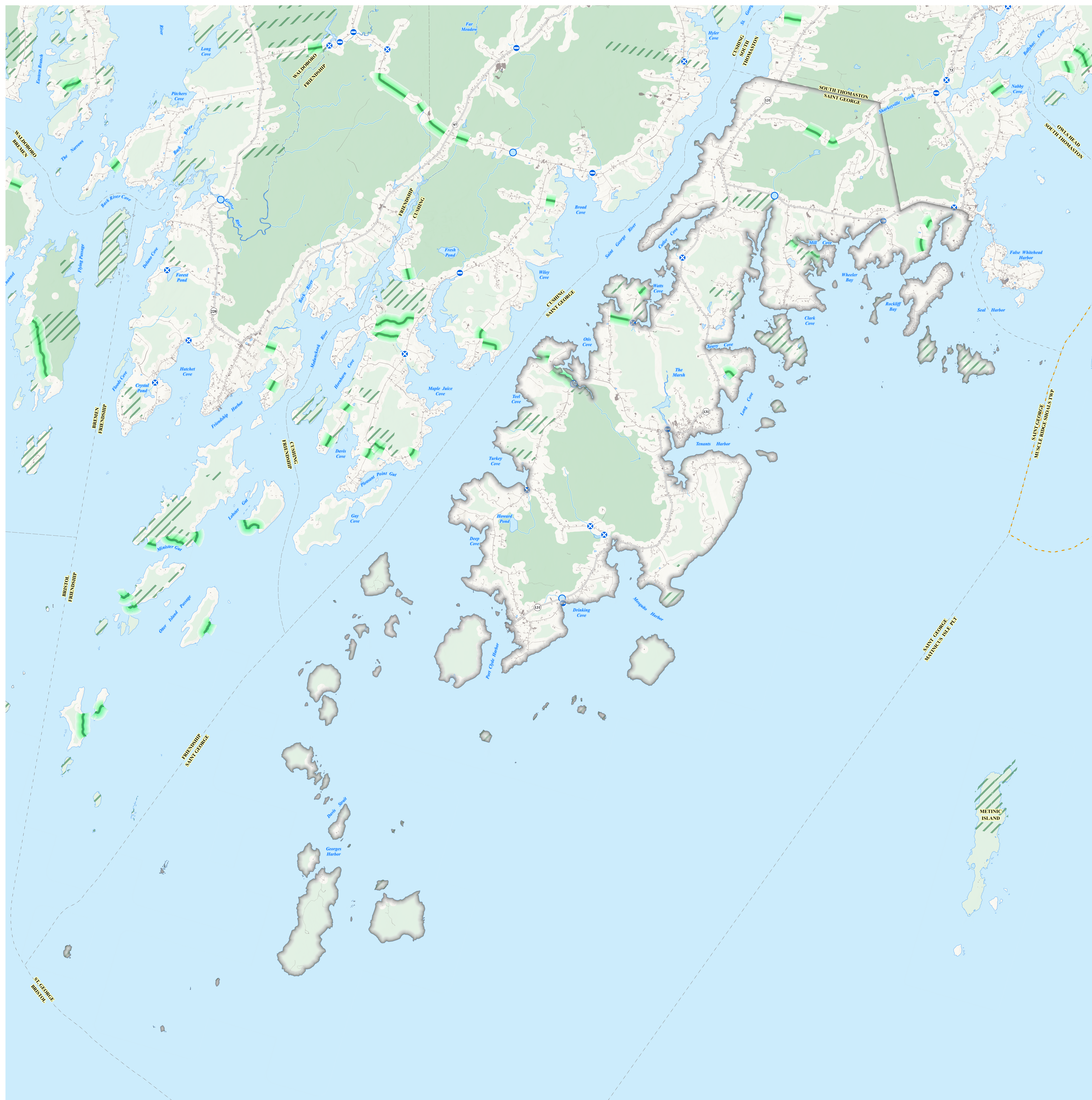
[Explore more Focus Areas on the BwH Map Viewer](#)



| | | |
|---------------------------------------|---|---|
| TOWNSHIP BOUNDARIES | CONSERVED LANDS | FOCUS AREAS & HABITAT CONNECTORS |
| ME Office of GIS (2021) | ME Dept of Ag., Cons., and For., Land Use Planning Committee | Working with Habitat (2023) |
| IMPERVIOUS | ME Dep. of Inland Fisheries and Wildlife (2014) | MAINE STREAM HABITAT VIEWER CROSSINGS |
| COP NOAA impervious land cover (2022) | UNDEVELOPED HABITAT BLOCKS | ME Dep. of Inland Fisheries and Wildlife (2022) |
| HYDROLOGY | Beginning with Habitat (2020) | |
| US Geological Survey (2016) | | |

Supported in part
by Maine Outdoor
Heritage Fund
lottery ticket sales

Supported in part by Loon Conservation Plate funds



Scale: 1:29,000
Projection: UTM 19
Datum: NAD 1983